

ZKTeco POMS - Real-time Operation and Monitoring Cloud Platform

Remote Monitoring, Support and Maintenance for Carparks



Introduction

ZKTeco POMS software offers cloud-based operation and maintenance system for real-time monitoring of carparks, including real-time summary of equipment information which indicates the carpark area information, devices' status, instant alarm and handling of device abnormality. It is an optimal system for system integrators (SI) to conveniently and effectively manage and monitor devices' status.



Less Maintenance Cost



Higher Efficiency



Improved Service Quality



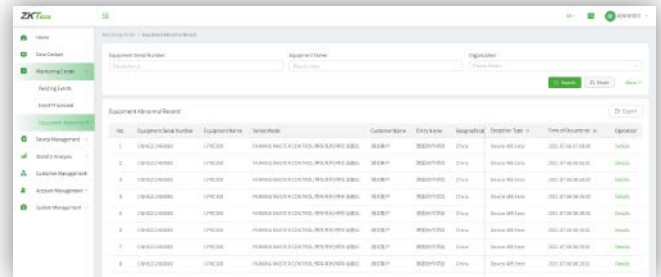
Second Chance of Sale

How Does POMS Work ?

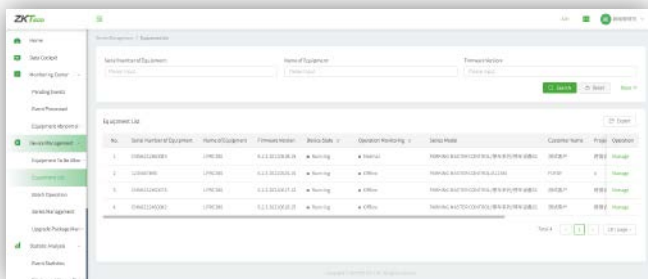
ZKTeco POMS software is a web-based operation and maintenance system for real-time monitoring of car parks and the deployed devices. It includes “Monitoring Panel for Parking Operation and Maintenance”, “Monitoring Centre”, “Device Management” and “Statistical Analysis”. It is an optimal system for system integrators (SI) to conveniently and effectively manage and monitor devices’ status.



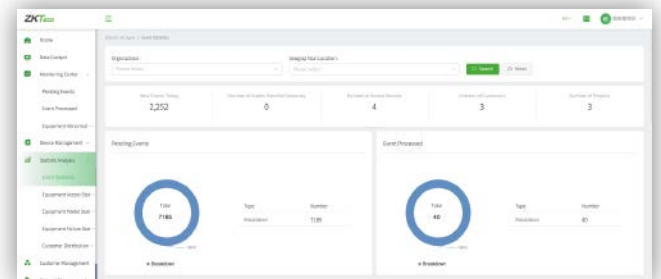
Parking Operation and Maintenance
Monitoring Panel



Monitoring Centre



Device Management



Statistical Analysis

Product Specifications



- ZKTeco POMS
Real-time Operating and Monitoring System



- LPRC300
License Plate Recognition Camera



- LPRS1000 (with LPRC300 Camera)
License Plate Recognition Integrated Machine

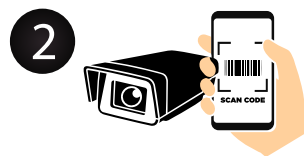


- LPRS4000
High-end License Plate Recognition Machine

ZKTeco POMS - Logic Flow



1 Sign in to POMS Cloud is enabled via web browser on both PC and smartphone



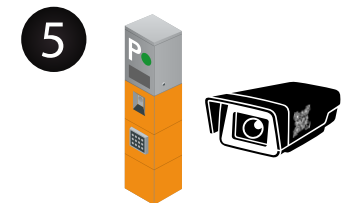
2 Scan barcode on LPR terminal to connect the terminal to POMS Cloud



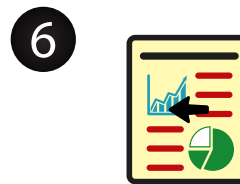
3 Finish product registration process in POMS Cloud with only several simple steps



4 Monitor, manage and upgrade registered terminals on POMS cloud through web browser on both PC and smartphone



5 POMS simplifies the entire management process, and enhances convenience of monitoring all performance and status of clients' terminals, enabling system integrators to provide timely maintenance service



6 POMS provides various report types in excel format to suit different actual needs



7 In case any abnormality of terminal occurs, POMS cloud delivers notification to both users, admin users and vendor side (upon setting)



8 Users are enabled to receive abnormal status notifications from POMS cloud



Parking Operation and Maintenance - Monitoring Panel

It is a real-time summary of equipment information which indicates the carpark area information, devices' status and the customer-industrial distribution.



Number of Accessible Devices

Total number of connected devices globally that allows the administrator to real-time monitor all devices.



Cumulative Run Time (days)

The total accumulated time from the beginning of the day to the current date.



Number of Customers and Projects

The total number of existing customers and projects in specific regions.



Monitoring Centre

It refers to the collection of abnormal event data to show the event of “Event Pending”, “Event Processed” and “Abnormal Records” of the car park globally.

In case any abnormal event of device detected, for example, disconnection of an LPR device, notification will be sent to the administrator, and the event details will be displayed indicating the problem of the relevant device.



It is the collection and interpretation of data to show the total cases of maintenance, the total number of abnormal issues and pending events.

The goal of statistical analysis is to identify trends, system integrators (SI) or distributors may use statistical analysis to find the trend and estimate the product life cycle of the equipment, to provide promotions of new products and markdowns at the right time.



Monitoring Reports Download

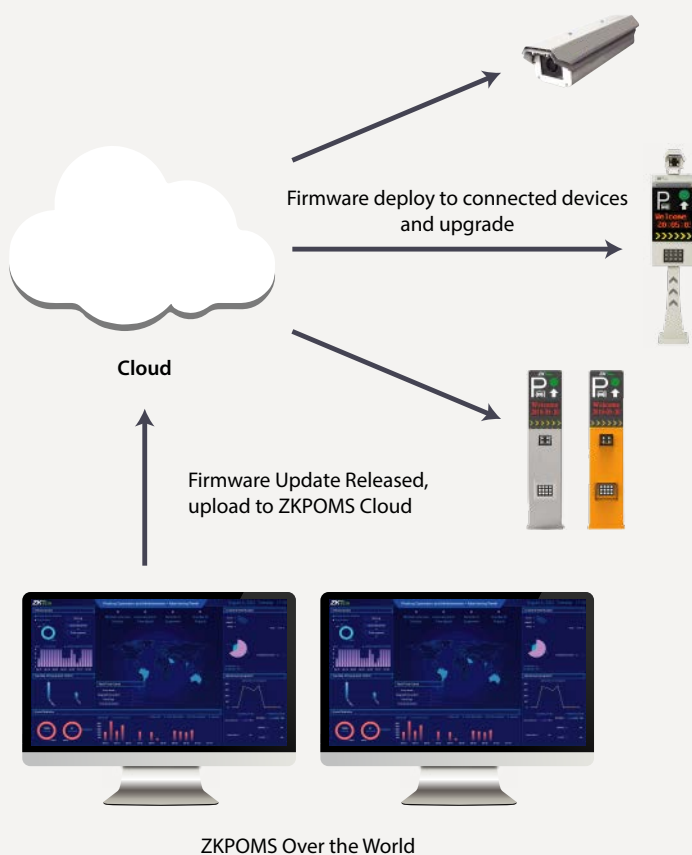
ZKTeco POMS helps users to generate summary reports for administrators to view the "device and operation status" and "device log" of region/ location. The reports also enable display of the event statistics of "abnormal", "normal", and "to be maintained" records of the month.



Supports OTA (Over-the-air) Firmware Remote Upgrade

Supports firmware upgrade on the air (OTA) of the license plate recognition device, and offers a real-time upgrade, scheduled upgrade and batch device upgrade.

Just one click, even if there are a million customers and devices, a System Integrator (SI) can easily perform an update to all of their clients and assist its customers to experience the latest features of the equipment.



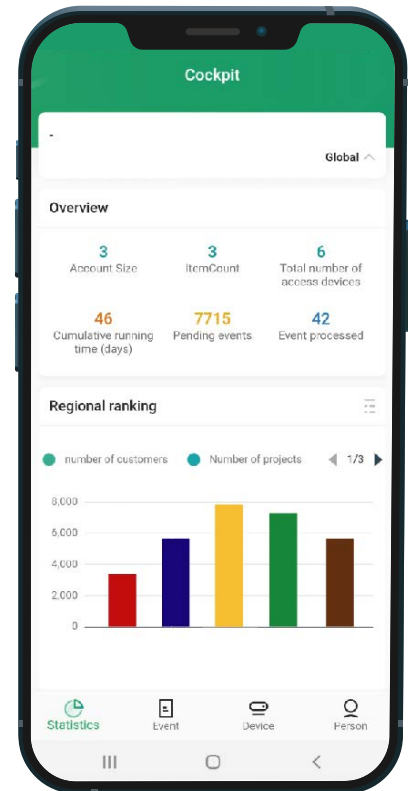
OTA Firmware Benefits

- Bugs and product behavior can be continuously improved even after the device is in the hands of your consumers.
- Companies can test new features by sending updates to one or multiple devices.
- Companies can save costs by managing the firmware across their fleet of devices from a seamless, unified interface.
- Developers can deploy frequently and reliably, knowing that products will stay functional as updates are released.
- OTA firmware augments scalability by adding new features and infrastructure to products after they are released.



Supports iOS and Android Real-time Monitoring

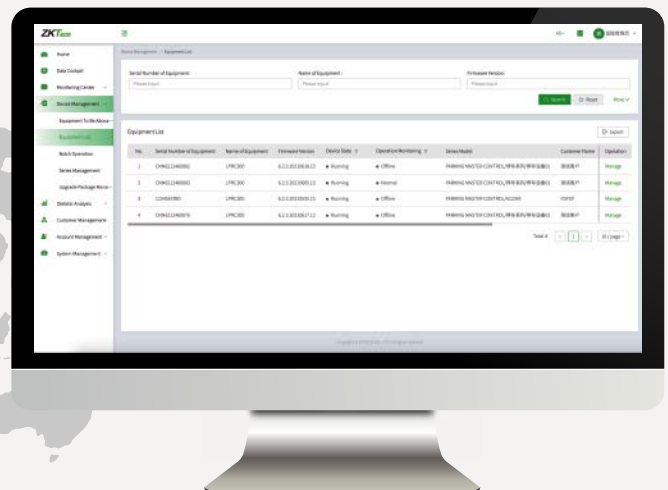
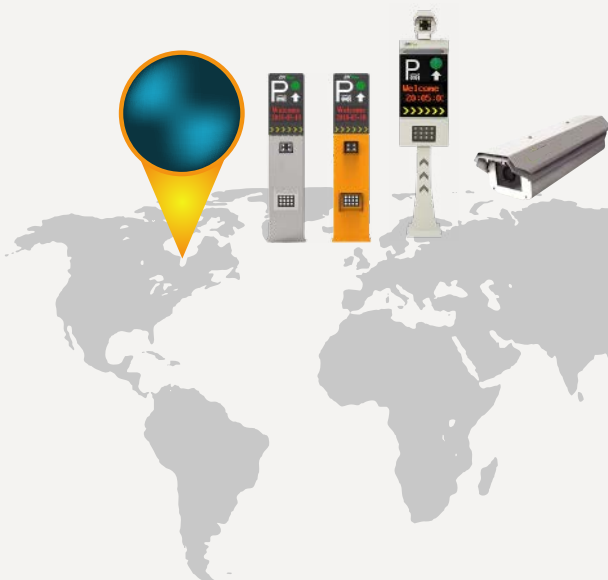
Provides mobile viewing of all monitoring functions (Device Management, Monitoring Centre and Monitoring Panel). Meanwhile, details of the abnormal events can also be view in the iOS and Android App in real-time.



Device Management

Device management is the process of managing the implementation, operation and maintenance of a physical device. It includes the equipment list, listing all installed equipment with serial number, operation status and service description.

The administrator can create a device group based on geographical location or organizational function. If there is an abnormal event occurred, the administrator can restart and restore the setting at the same time.



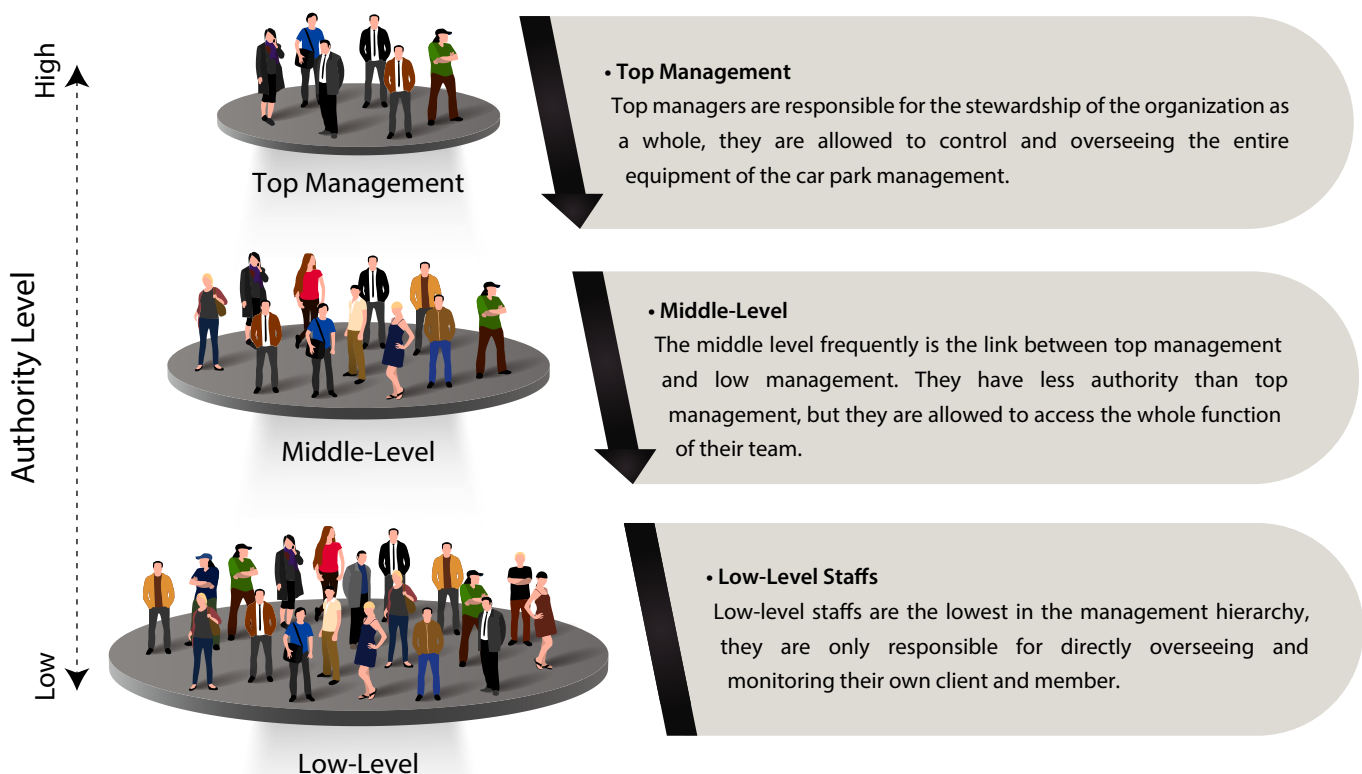
App Scanner to Quickly Add Products to POMS System

With POMS scanner, system integrator and distributor are enabled to quickly add products by scanning the barcodes on the products to save time and efforts when installing products to the systems.



Levels of Management

Level of management can be generally classified into various authority levels (low-level, middle-level, top-level), the higher level of management level, the higher level of authority to monitor, oversee the function of surveillance, equipment management, statistical analysis and system management of the client.





Web-Based Real-time Operating and Monitoring System

ZKTeco POMS can be accessed anytime and anywhere on a web browser for remote management of numerous equipment and devices over the world, such as ZKTeco LPR (License Plate Recognition) device.



Alarm and Processing of Device Abnormality

The function of alarm and processing of device abnormality enables instant and active handling of device to increasing service quality and lower service cost. In the meantime, work orders and maintenance staffs are controlled and monitored in the whole process, and maintenance records will also be generated for strict tracking.

New Operation and Maintenance Mode

Enterprises are enabled to actively obtain operational status of devices. Precautions and alarms will be generated towards any device malfunctioning, manufacturers thus can have clear understanding about devices' live status for any necessary maintenance or repair. With the new operation and maintenance mode, enterprises are able to solve at least 90% problems via remote programs. For specific replacements of parts, after sales staffs can be delivered to precisely perform repair to save time and costs, and significantly reduce of device error and enhance efficiency of use to increase enterprises' service efficiency and quality.

